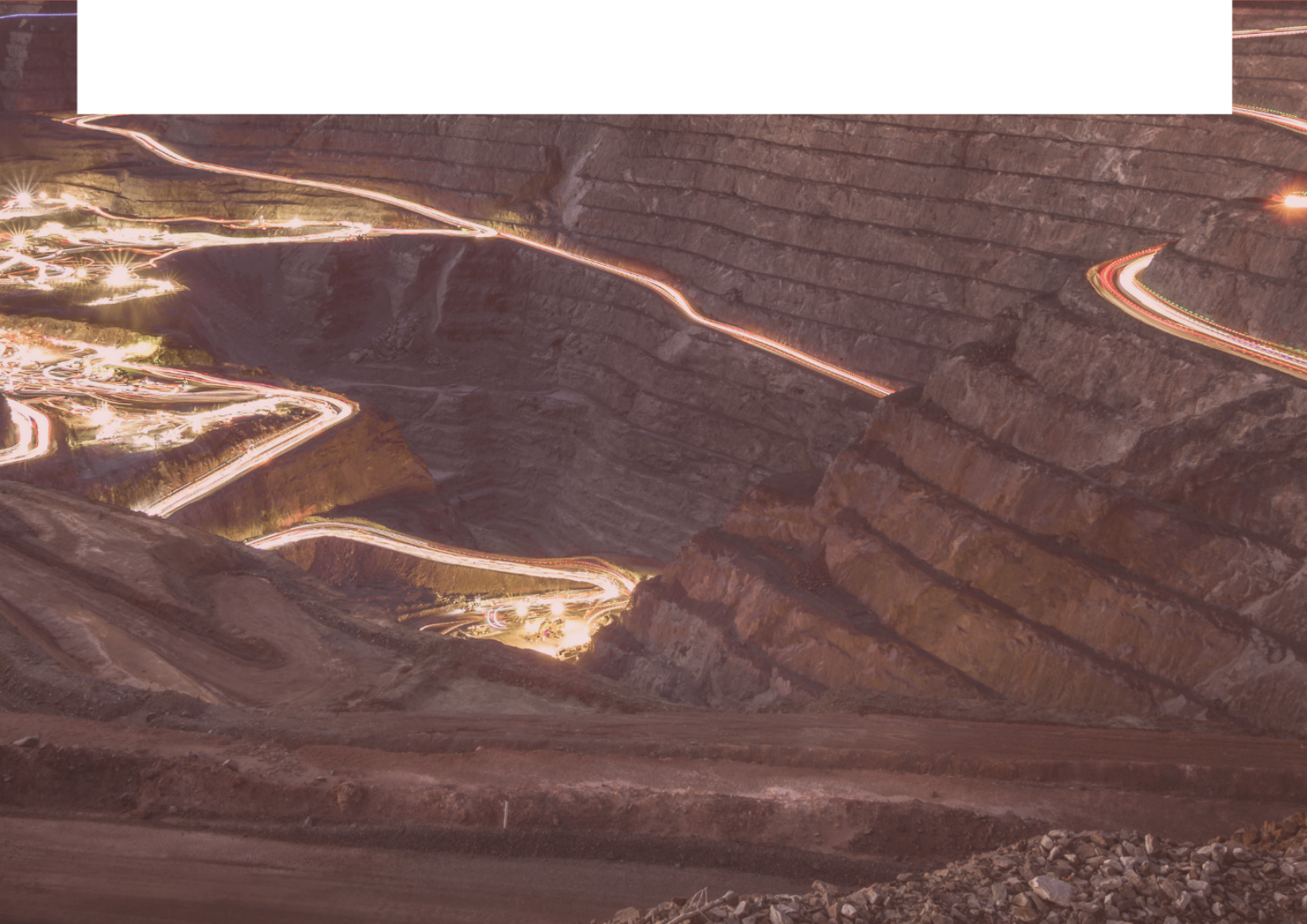


Release Notes

Studio NPVS 3.1 Beta



© Copyright 2026 Datamine Software

All Rights Reserved Confidential and Proprietary

Published: 31 March 2026

Legal Disclaimer

The product described in this documentation may be connected to, and/or communicate information and data via, a network interface, which should be connected to a secure network. It is your sole responsibility to ensure a secure connection to the network and to establish and maintain appropriate measures (such as but not limited to the installation of firewalls, application of authentication measures, encryption of data, installation of antivirus programs, etc.) to protect the product, the network, your systems, and the interface against any kind of security breach, unauthorised access, interference, intrusion, leakage, damage, or corruption or theft of data. We are not liable for damages or losses related to any such security breach, unauthorised access, interference, intrusion, leakage, damage, or corruption or theft of data.

Contents

Overview	5
Further Information	5
Studio NPVS 3.1 Release Notes	6
Key Improvements	6
Command Improvements	6
Create Multiple Sections	7
Edit Legend Wizard	8
RocScience Dips Export Driver	8
Process and Command Speedups	9
Selection Settings Simplified	9
Ribbon Standardization	9
Triangulation Control	10
Multiple File Loads	10
Geosoft® Driver	10
Leapfrog Data Import	11
Legend Tools Update	11
Edit Legend Wizard	12
Ribbon Standardization	12
Improved Documentation	13
License Services Security	13
Other Command & Process Updates	14
Safer Scripting	15
Early Access Features	15
All Improvements	18
Commands & Processes	18
Utilities & Supporting Services	22
Additional Core Improvements	22
Utilities & Supporting Services	26

Defect Fixes	28
Additional Defect Fixes	31
Studio NPVS 3.0 Release Notes	34
Key Improvements	34
New Datamine File Format	34
Plots Overhaul	35
Filled Wireframe Intersections (Preview)	35
3D Window Improvements	36
Text Importer	37
New Processes	37
Datamine File Tags	37
Command & Process Improvements	38
All Improvements	39
Commands & Processes	39
User Experience	42
Utilities & Supporting Services	43
Documentation & eLearning	43
Scripting & Automation	43
Additional Defect Fixes	44

Overview



Studio NPVS is unique in the mining industry as the only strategic mine planning system that optimises both mine design and schedule in the search for maximum NPV.

Note: Studio NPVS is actually a collection of 3 products; Studio NPVS, Studio Maxipit and Studio RMS.

Studio NPVS is one of several products in the Studio product family, which includes:



Studio EM for exploration data analysis and modeling.



Studio Geo is for geological and structural modeling.



Studio Mapper for geological face mapping and reporting.



Studio NPVS+ for strategic open pit optimization, design and enhanced scheduling.



Studio OP for open pit design and operational scheduling.



Studio RM for mine geology, reserve modeling and resource estimation.



Studio Survey for open pit and underground mine surveying and reporting.



Studio UG for underground mine design and scheduling.

Further Information

This document includes cumulative releases notes for Studio NPVS.

Release notes for other versions of Studio NPVS are available via the Support Portal <https://www.dataminesoftware.com/support/>.

For the complete Studio NPVS documentation, see <https://docs.dataminesoftware.com/StudioNPVS>.

Studio NPVS 3.1 Release Notes

Thinking of upgrading to Studio NPVS+?

Good move! Talk to your local Datamine office today for a tailored rollout plan for your organization.

Key Improvements

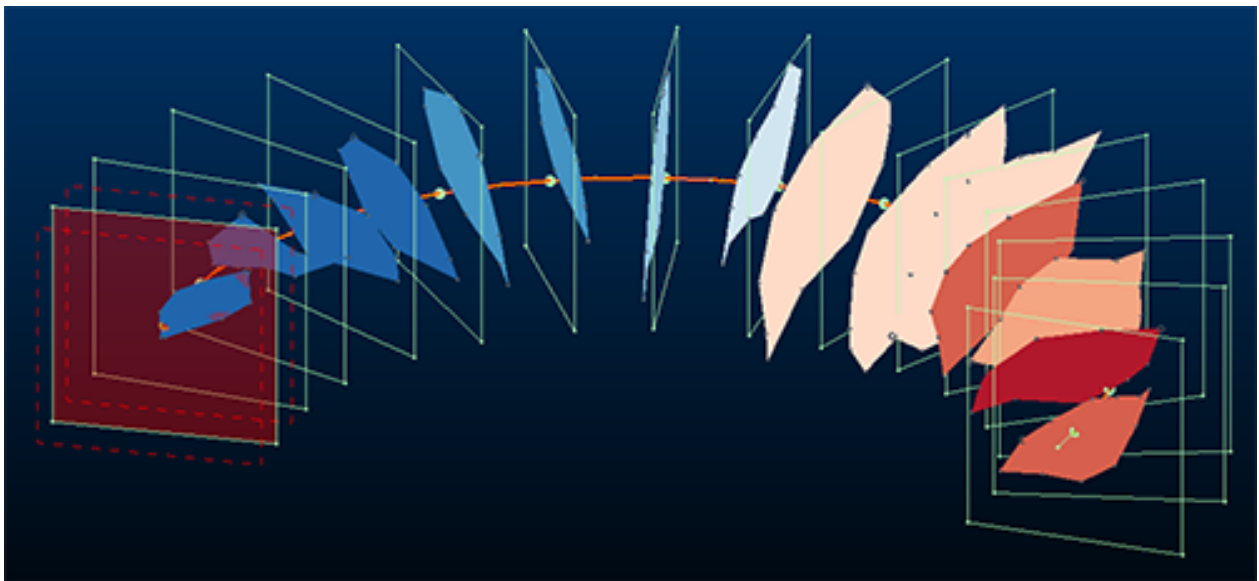
Command Improvements

This update sees the introduction of some new wireframe data commands to make viewing and saving wireframe data easier, and other improvements:

- `assign-attributes-by-selection-order` – You can now automatically apply a suffix or prefix to alphanumeric attribute values generated by selection order.
- `dtm-create` – We added a new “Make diagonals consistent” option to Create DTM so triangulation is consistent and volumes match expectations where point data is the same across multiple data objects.
- `grid-dtms` – You can now calculate and output True Dip data when creating the minimum or maximum elevations of points belonging to multiple (and potentially overlapping) wireframe surfaces.
- `extend-string-to-wireframe-intersect` - A new command that extends the final segment of a string using its current azimuth and dip to terminate on a wireframe surface.
- `filter-wireframe-off` – Hide selected wireframe data without removing it from memory. If no wireframe data is selected when the command is run, you are asked to select a wireframe face. In this way, faces can be successively removed. This command can also be found on the **Format** ribbon.
- `hide-non-selected-wireframes` – Hide unselected wireframe data, leaving only selected wireframe data visible. Useful for focusing on a subset of wireframe data in a dense set. This command can also be found on the **Format** ribbon.
- `import-maps-to-files` – We have improved the import-maps-to-files command for local databases to support more map types, add georeferenced-data filtering and automatic loading of imported results into the 3D window with default templates.

- `insert-string-wfm-points` - A new command that adds one or more vertices to string data at its intersection point(s) with a target wireframe.
- `write-selected-wireframes` - Save currently highlighted (selected) wireframe data to an external Datamine file. Data can be selected by any method, including the selection of independent triangles. This command can also be found on the **Data** ribbon.

Create Multiple Sections



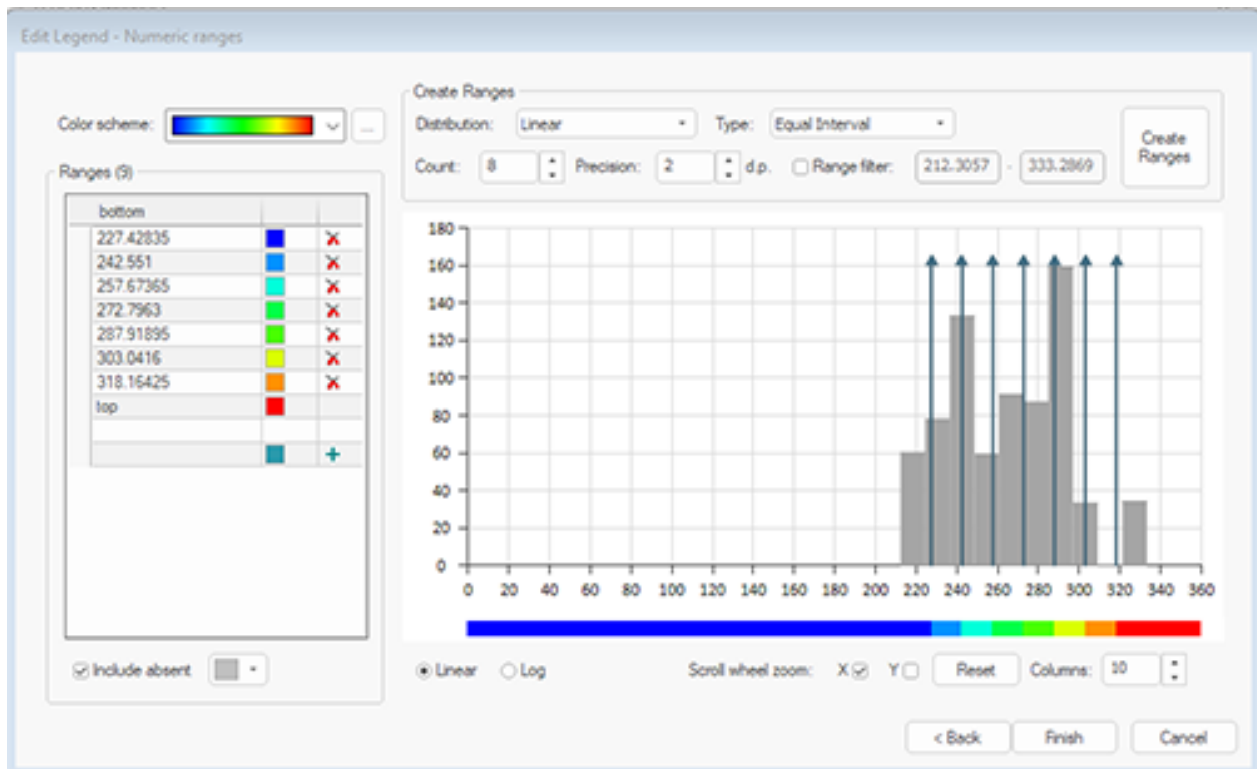
The new **Create Multiple Sections** feature significantly streamlines the process of generating and managing sets of parallel or string-based sections for geological analysis and planning. Previously, 3D window users had to manually create each section or edit section definition files outside the 3D environment, which was time-consuming and prone to error—especially when dealing with off-azimuth sections that required manual coordinate calculations. With this enhancement, you can now quickly define multiple sections in parallel, along a string, or per string, directly within the 3D window, using intuitive controls for orientation, spacing, and reference points.

Choose fixed or relative section orientations, and automatic or manual reference points, and dynamic adjustment of section spacing and dimensions based on the loaded data. Sections can be saved as definition files for reuse and further analysis, ensuring seamless integration with existing workflows. By automating complex tasks and providing a user-friendly interface, this tool addresses a common gap in geological modelling workflows, empowering you to generate comprehensive section sets with minimal effort and maximum accuracy.

Access the new functionality using the **3D View** ribbon (**Sections >> Multiple Sections**) or run the command `create-multiple-sections` (quick keys "cms").

Access the new function by running the command `create-multiple-sections` (quick keys "cms").

Edit Legend Wizard



In 2025, we introduced a new wizard to take the hassle out of creating a new legend of any type (unique values, range, filter). This was particularly helpful when generating legends from loaded data object values, but also made light work of setting up and managing unique value and filter intervals.

Now, we've extended this facility to existing legends, meaning you can edit legends in a similar way to creating them, using the popular range generation and gap-filling tools already available.

To access this facility, pick a legend and click **Edit Legend** in the **Legends Manager**.

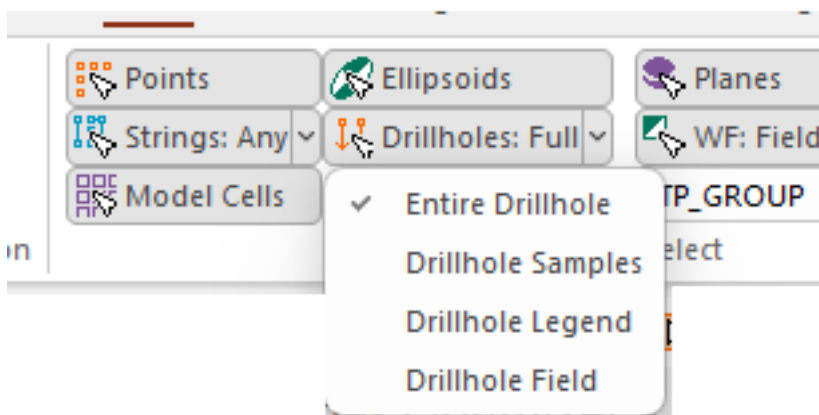
RocScience Dips Export Driver

A new **RocScience Dips** export driver has been added to the Data Source Drivers set to allow you to export string data in the Dips format, describing dip, dip direction and midpoint coordinate.

Process and Command Speedups

- The performance of reading and writing Datamine files has been improved, offering general speedups in many functional areas.
- The **Project Data** control bar now updates more quickly after loading new data.
- The **COPY** process is now much quicker.

Selection Settings Simplified



You wanted more intuitive data selection, so we've rationalized and simplified the **Home** ribbon's presentation of these options to make things a lot clearer. Now, a toggle shows, for each data type, whether that data type is selectable or not and we've tackled the more complex case of wireframe data selection by giving access to the various options (by field, by group, by filter and so on) in the same area.

Ribbon Standardization

We have made the **Edit, Report, Model, Digitize** and **Format** ribbons consistent across products, with common functions laid out in an identical manner. Product-specific additions still exist, and these are also presented consistently if they appear in multiple products. Wireframing functions are also standardized within the existing ribbons for Studio EM and geology products (**Explicit, Wireframe**) planning products, where they have been renamed to **Wireframe Design** and **Wireframe Tools**.

Help files have been updated to reflect these changes.

Triangulation Control

The key change for this interim maintenance update is 'constant triangulation', providing tools to ensure that functions that rely on calculating the difference between surfaces, such as cut and fill operations and Studio Survey EOM open pit reports, don't generate unwanted, trivial data fragments unexpectedly in unmined areas. This logic works in parallel with existing fragment removal options, which remain available.

For more information, search your help file for "consistent triangulation".

Multiple File Loads

You can now import or load multiple files in one operation using new multi-file options. Just pick the files you want to load using a simple browser, and Studio does the rest. You still get to specify load and importation settings, including those specific to a particular driver, but now you can complete the process in a fraction of the time.

To access this function, click **Add to Project** or **External** on the **Data** ribbon and pick your files.

Either import multiple files to the project or load them directly into memory. These files can be of the same type and format or different ones, meaning you can pick a batch of files of various formats (CAD, BMF, DMX and more) and either add them to the project or load and display them after importation and conversion. This makes light work of importing files from other projects and applications.

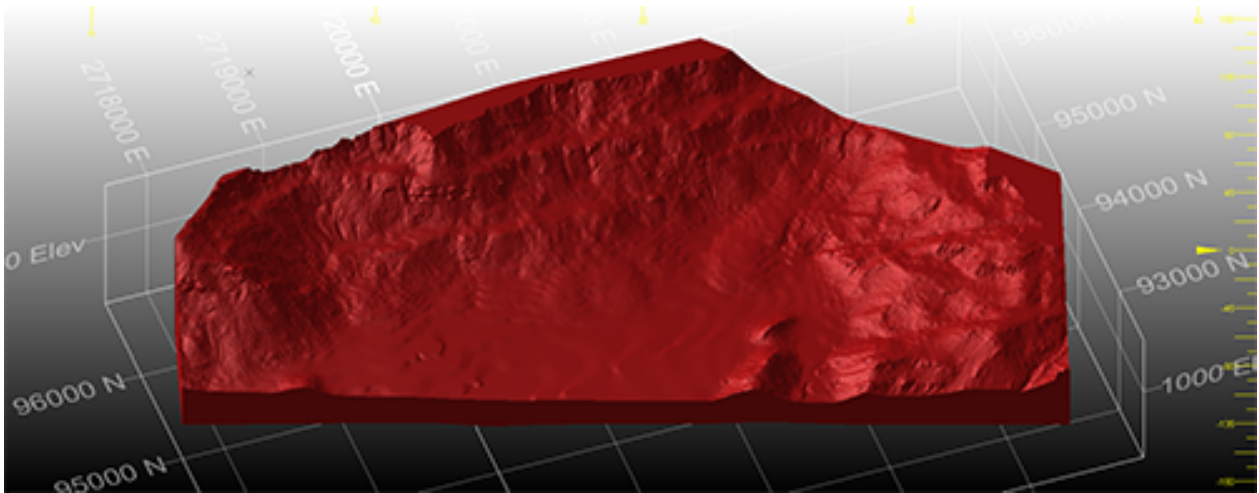
To use the previous driver selection method, use a menu option to pick a data type or select the new "by driver" option for project import.

Geosoft® Driver

Geosoft Voxel Models files represent useful geophysical files, also known as *UBC voxel models*. These files contain geophysical inversion data. An import comprises 2 or more files - one file to define the geometry, and 1 or more files containing data values associated with the cells.

To support this new file type a new *Geosoft* option is available on the **Data Import** screen.

Leapfrog Data Import

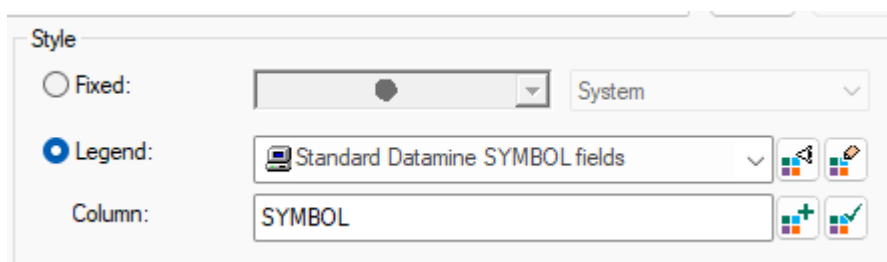


You can now import Leapfrog mesh (.msh) and Leapfrog Project Model (.lfm) files using a new Data Source Driver. Data is imported as wireframes.

If importing a Leapfrog Project Model file, you can choose to import all associated mesh data or a subset, and can choose the attribute to use to store the original mesh name, making downstream data management much easier.

The new formats are also supported by Studio's drag-and-drop facility, meaning you can drag one or more files into the 3D view and default load settings are used to create the relevant objects in memory and display them.

Legend Tools Update

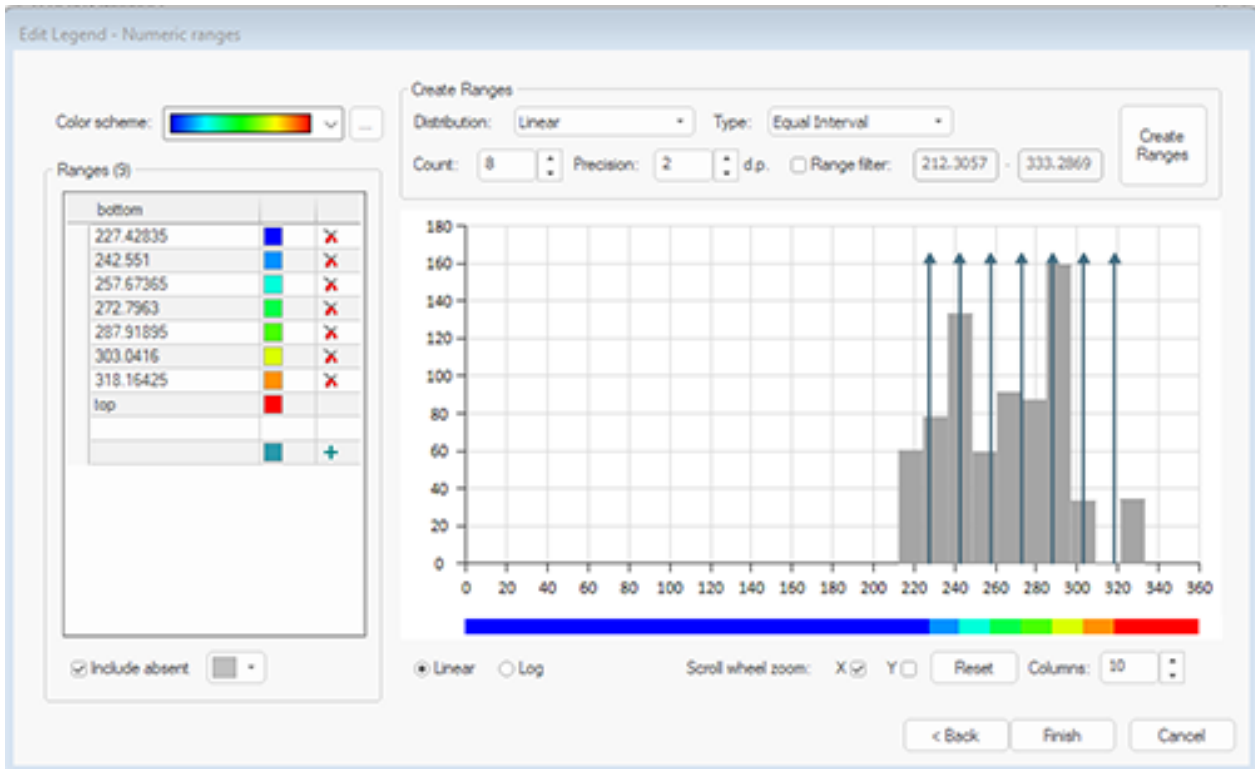


3D properties and similar screens now use a clearer and expanded toolset for legend management.

You can still display and edit legends as before, but now there is a dedicated button to create a new legend and (reinstating previous, reportedly popular behaviour) a new button appears to either select the current default legend for the selected column or set the current legend as the default for the current column (with no further prompts or popups).

We've also added the ability to add any colour chip to the unique legend item table in the New Legend Wizard

Edit Legend Wizard

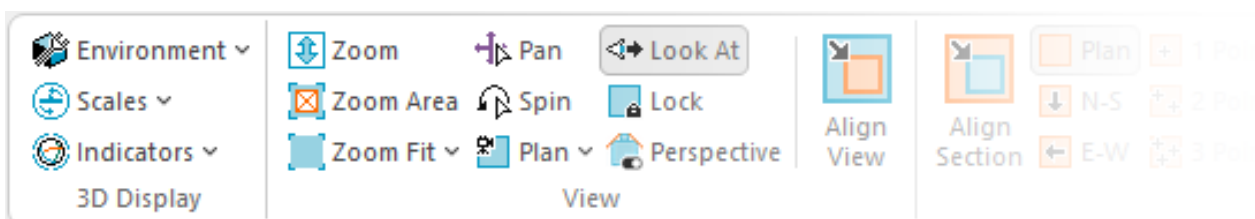


In 2025, we introduced a new wizard to take the hassle out of creating a new legend of any type (unique values, range, filter). This was particularly helpful when generating legends from loaded data object values, but also made light work of setting up and managing unique value and filter intervals.

Now, we've extended this facility to existing legends, meaning you can edit legends in a similar way to creating them, using the popular range generation and gap-filling tools already available.

To access this facility, pick a legend and click **Edit Legend** in the **Legends Manager**.

Ribbon Standardization



Following your requests to adopt a more consistent ribbon layout between Studio products for core (shared) commands, we've made a few changes for this update. This means your familiarity with one Studio is now useful if using another product in the Studio range. Where possible, we have standardized command grouping and positions for the **Data**, **Format** and **3D View** ribbons. We've maintained specific layouts where a particular operating domain demands it, such as grade estimation, resource modelling, pit design and field mapping functions, so these aren't changing.

We will continue to standardize our ribbons, where appropriate, in future releases.

Improved Documentation

As part of a wider campaign to improve how we support our customers, the Studio NPVS help file gets a refresh with this update. Moving away from the "field details" approach and towards a more intuitive activity-based method, the new help files don't just explain what something does, in isolation, but how it forms part of a larger flow of activities to create the desired result.

Reference information still exists, but is presented appropriately, meaning the information you want isn't hidden somewhere in the 10,000+ page repository that supports your product. Studio NPVS also offers web-based live documentation with smart searching, presented in a clear and intuitive way, building knowledge at a sensible pace and making reasonable assumptions about previous knowledge. We're not hiding anything either; our help system is accessible to anyone, meaning it also contributes to the results of AI chat systems (more to come on this).

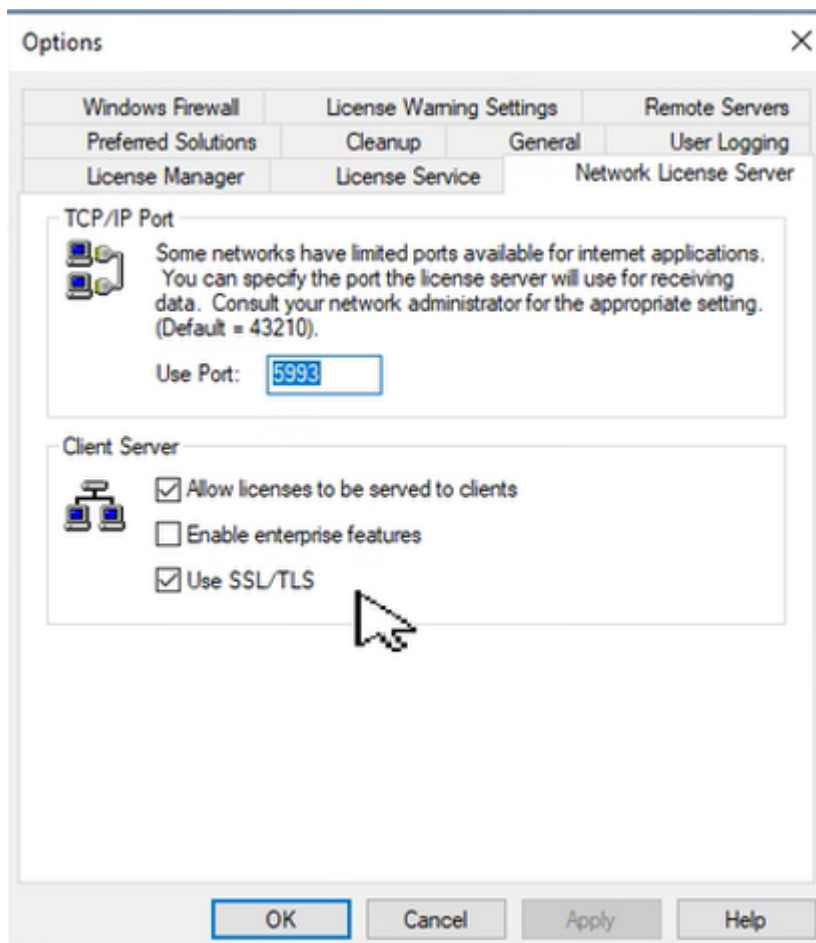
In addition, stale information has been renewed, and a tighter workflow adopted to ensure all application changes can now be considered when our documentation team works on new content for each release.

License Services Security

At Datamine, we take the security and integrity of your data seriously.

License Services 7.0 is installed with your product update, and it provides additional security protection for client-server traffic.

You can now configure a license server to transmit and expect encrypted traffic. Utilizing the latest Transport Layer Security (TLS) protocol from Microsoft®, this level of data encryption helps prevent the interception and misuse of port traffic by malicious actors.



Server configuration can be completed in seconds (see above) and - providing connecting clients are running License Services 7.0 or above - client configuration is automatic; clients detect the current server mode and adjust their settings accordingly.

Legacy data mode is still supported; no server changes are necessary unless you want to change your data transmission protocol. Legacy License Services clients can connect to an upgraded (non-encrypted) server and vice versa.

You can find out more about these changes by searching for "License Services TLS Support" on the Datamine Support website, or by contacting your local Datamine office.

Other Command & Process Updates

- COPYMOD now supports retrieval criteria.
- A new command `digitise-doughnut` lets you create data representing fully enclosed internal structures.

- `smooth-gradient` can now be used to fully smooth (start to end) preselected strings.
- `REBLOCK` now supports retrieval criteria.
- `INTEXT` can now process data using either a data definition (INDD) file or a `SETTINGS` file, or neither.
- `WIREFILL` now supports retrieval criteria.

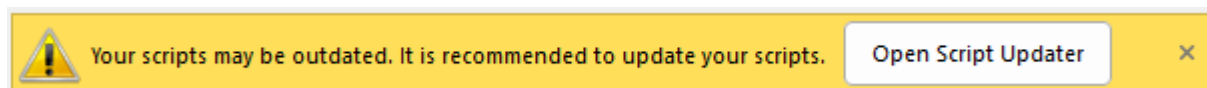
Safer Scripting

To maintain the highest level of local data security, we've rigorized our scripting interface in Studio products to provide a way to securely instantiate approved ActiveX objects through automation scripts. This provides a safer and more marshalled automation environment.

In brief, we've introduced a new Studio application method (`CreateObject`) that can be used in place of the deprecated `new ActiveXObject("Prog.ID");` instruction. A call to something like `window.external.System.CreateObject("Prog.ID");` allows approved ActiveX objects to be instantiated to support your scripts. Most importantly, the ones that provide the highest risk are blocked.

The **Datamine Studio Script Updater**, accessible via your **Home** ribbon, can update your scripts either individually or as a batch, automatically making them safer to use.

If you load a script that looks like it could benefit from additional protection, a banner appears atop your display area. This also provides access to the conversion utility:



Early Access Features

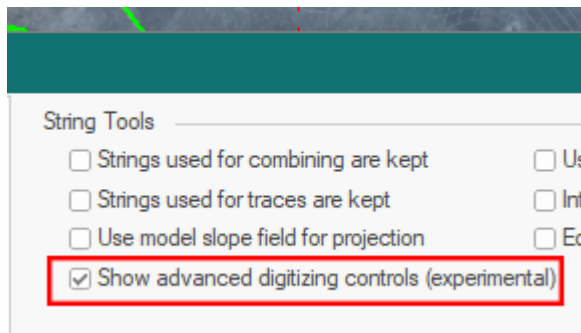
Advanced Digitizing Controls

As part of a wider campaign to improve and extend our digitizing tools, we've introduced a new way of creating new string data in this update, and we'd love to know what you think before we finalize things.

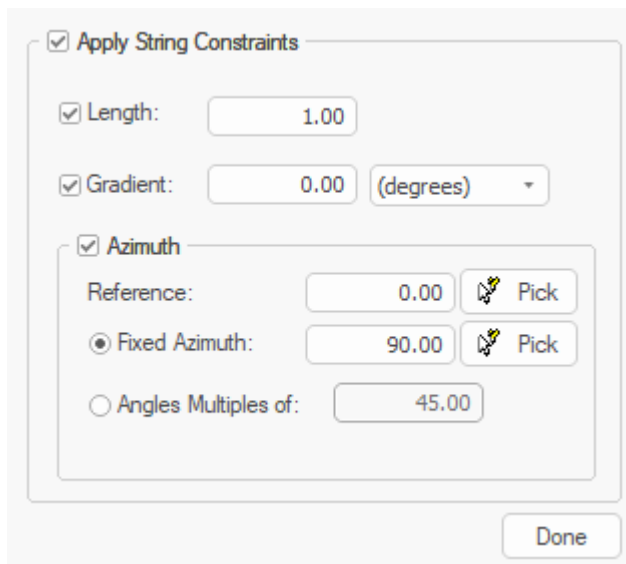
`new-string`, arguably the most commonly used design command in any Studio product, has been extended over the years and also supported by a range of other design functions to enhance more 'managed' digitizing often required in the mine

planning domain, where design drafting with precise string properties can be critical to an effective design and schedule. The `extend-string` command has been similarly enhanced.

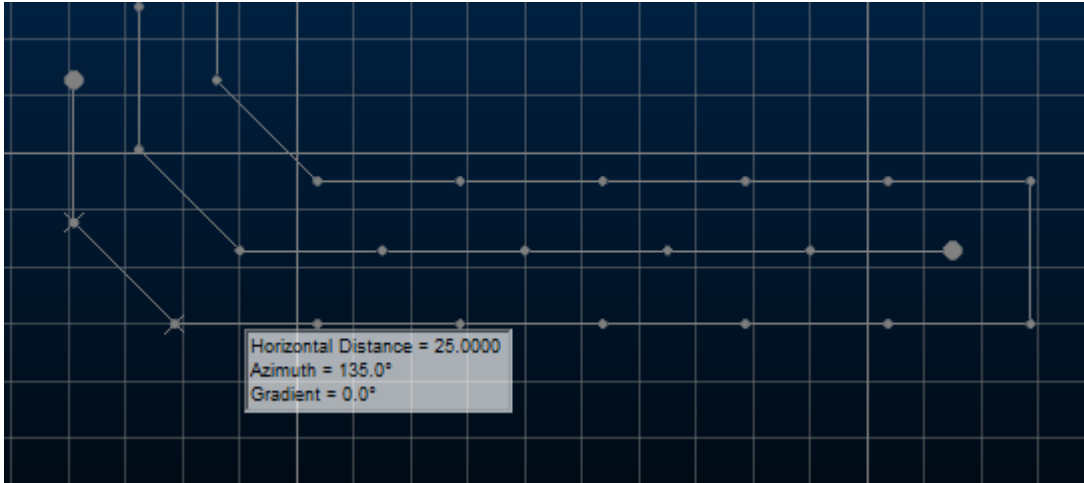
`new-string` and `extend-string` can run in an enhanced mode in this update. By default, both commands behave as before, but there's a new project setting that allows advanced settings to be applied during digitizing to constrain the orientation of the next string segment you create. Located on the **Points and Strings** screen, check **Show advanced digitizing controls** to activate enhanced mode for **new-string** and **extend-string**:



The next use of either command displays a popup allowing you to constrain the length, azimuth and gradient of the next string edge. For constrained angle changes, you can also ensure azimuth changes are made in fixed amounts from the previous string segment:



This can help to ensure operational and design constraints are honoured during digitizing, saving time later by editing and adjusting design data. Help files for both commands have been updated to explain how to use the new controls. You can also press F1 when the new popup displays during digitizing.



Please let us know what you think of this early-access feature. We value your feedback!

All Improvements

Commands & Processes

- **Multiple Cases** Your product is now supported by the **MineTrust** data management system. Consult your help file for more details.
- **CORE-10528** We have simplified unloading multiple objects from the Project Data Bar by showing a single confirmation prompt instead of repeated pop-ups.
- **CORE-10270** The unsupported Mining Power Pack utility has been retired and removed from Studio products, replaced by newer charting functions and enhanced Excel output from processes.
- **CORE-10233** We have removed the redundant "Save to Project" choice in popups so new 3D objects always save to disk, with project storage handled via Data Object Manager or project archiving if required.
- **CORE-10177** Drillhole selection methods are now available on the Home ribbon.
- **CORE-10169** Manual pit design commands are now available on the Digitize ribbon.
- **CORE-10138** We have speeded up the loading of Datamine files and updating the Project Data control bar.
- **CORE-10216** The minimum volume cleanup tolerance in cut and fill functions has been reduced from 0.05 to 0.001
- **CORE-10176** Additional documentation has been added for **EXTRA** relating to potential field name ambiguity.
- **CORE-10101** The **MAKEDTM** process has a new parameter (@DIAGONAL) to emulate the "Make Diagonals Consistent" switch of the interactive dtm-create screen.
- **CORE-10086** Improved **DmFile performance for DMX files** by optimising default row handling and cache usage to significantly speed up file operations.
- **CORE-10080** Your product now warns you where your graphics capabilities don't match a minimum OpenGL standard required to operate correctly.
- **CORE-10073** The performance of reading and writing Datamine files has been improved, offering general speedups in many functional areas.
- **CORE-10071** The **COPY** process is now much quicker.

- **CORE-10043** The **Add to Project** screen now appears more quickly where the local PC has multiple networked drives available.
- **CORE-10035** We have improved the import-maps-to-files command for local databases to support more map types, add georeferenced-data filtering and automatic loading of imported results into the 3D window with default templates.
- **CORE-10034** The "Make Diagonals Consistent" DTM feature is now accessible from a script.
- **CORE-10206** You now have separate **Import >> Datamine** and **Import >> External** buttons on the Data ribbon so you can clearly choose whether to add Datamine project files or import and convert external files. Icons for all import and load functions have also been updated.
- **CORE-10021** You can now avoid potential field name and function name ambiguity in the same transform using square brackets to explicitly declare field names.
- **CORE-10004** Added a new "Make diagonals consistent" option to **Create DTM** so triangulation is consistent and volumes match where point data is the same across multiple data objects.
- **CORE-9986** Default font lookups have been optimized, providing performance enhancements.
- **CORE-9922** Data type filtering commands on the Report ribbon are now supported by undo/redo.
- **CORE-9917** When translating 3D data (translate-point, translate-string and so on) by script, a `RepeatCount` final parameter now accesses the "Repeat" functionality of the interactive command.
- **CORE-9902** Start Page online/offline controls have been reorganized to make their usage clearer.
- **CORE-9895** You can now create a new drillhole attribute using the **Assign Lithology** task.
- **CORE-9895** New wireframe filtering commands have been added to the **Format** ribbon. A new selected wireframe saving command has been added to the **Data** ribbon.
- **CORE-9847** The **Project Data** bar now shows the active section in bold, for clarity.
- **CORE-9846** The **Project Data** bar now highlights unsaved object data changes in italics.
- **CORE-9839** A new context-sensitive **Logs** ribbon reimplements log sheet functions.

- **CORE-9835 COMBTRI** can now receive up to 62 input files.
- **CORE-9771** A new command - `switch-drillhole-selection` - lets you pick drillhole data either as entire holes, **FROM-TO** intervals, the current display legend or any nominated unique attribute value.
- **CORE-9752** Reloading a script now runs a check for unsafe syntax and displays a warning if it is found.
- **CORE-9751** The **DTS** ribbon no longer appears if DTS is not installed.
- **CORE-9739** The **ROTORDER** process now appears on the **Data** ribbon (**Transform** group).
- **CORE-9664** The folder browser displayed by the New Project Wizard has been updated.
- **CORE-9603** `insert-offsets` is now available on the **Digitize** ribbon (Outlines menu).
- **CORE-9597** An issue causing a texture to not georeference correctly has been resolved.
- **CORE-9559** You can now select multiple folders in the Project Data bar, allowing expanding and collapsing of multiple items.
- **CORE-9558** We have aligned the Project Data bar and 3D view trees so that points, planes, ellipsoids, strings, drillholes, wireframes, block models and sections now use the same icons.
- **CORE-9556** The **Project Data** bar now includes a useful toolbar of file-related functions.
- **CORE-9457** Creating an alphanumeric legend on a large block model is now quicker.
- **CORE-9429** The **Save Data/Set Auto Reload** screen now has another option to allow file save prompts and browsers to be hidden during saving, saving with a default file name if a file association doesn't already exist.
- **CORE-9425** The **Independent View** screen now has a check box to select whether new 3D object overlays should be automatically added, this defaults to unchecked.
- **CORE-9381 Report** ribbon items that are common to all Studio products now appear in the same arrangement throughout the product range. Product-specific items remain.
- **CORE-9380** The **Model** ribbon is now presented consistently across the Studio product range.

- **CORE-9379** The **Explicit** and Wireframe ribbons are now consistent in Studio EM and geology products. Wireframing functions have been split into two ribbons; Wireframe Design and Wireframe Tools - this change is consistent throughout all Studio planning products.
- **CORE-9377** **Home** ribbon functions common to all Studio products now appear in the same arrangement throughout the product range. Product-specific items remain.
- **CORE-9355** Long field name support is now provided and expected in all Studio products.
- **CORE-9056** Project file browsers have been updated in line with modern Studio product file types.
- **CORE-8970** Data selection toggles and options have been simplified on the Home ribbon.
- **CORE-8603** A new command - `insert-string-wfm-points` - adds one or more vertices to string data at its intersection point(s) with a target wireframe.
- **CORE-8602** A new command - `extend-string-to-wireframe-intersect` - extends the final segment of a string using its current azimuth and dip to terminate on a wireframe surface.
- **CORE-8569** Enhanced error reporting has been added to the `fillet-single-string-point` command.
- **CORE-8547** Icons on the Add New File screen have been updated.
- **CORE-8520** The **Digitize** ribbon has been standardized across all Studio products, although product-specific options still exist.
- **CORE-8491** The **Drillhole Planner** now automatically saves your settings (including dip convention) on closing and reinstates them when reopening. A Reset button has also been added.
- **CORE-8432** Feedback information when using `extend-segment-virtual-intersect` has been improved.
- **CORE-8432** The `grid-dtms` command can now output True Dip values in addition to thickness analysis.
- **CORE-8050** The object name for `convert-wf-hull` and `wireframe-section` screens is now editable by default.
- **CORE-7975** You can now edit existing legends using the **Format Legend** wizard, as well as creating them.
- **CORE-7272** The **Edge Editor** is now available in this product. Use it to dynamically adjust string edges. Find it on the **Digitize** ribbon.

- **CORE-7175** You can now change the default gradient convention when using the string-at-gradient-on-wf command.
- **CORE-6308** You can now **edit the existing image registration** of a loaded pictures object using a new menu option on the Sheets or Project Data control bar.
- **CORE-4838** We have added an option for **SWATHPLT** (@EXCEL=2) to name Excel output workbooks after the SWATH output file so multiple swath plot sheets can be generated without overwriting each other.
- **CORE-3204** The new **Create Multiple Sections** tool lets you create sections throughout your data using a range of options.
- **CORE-1953** Hide selected wireframe data (`filter-wireframe-off`), hide unselected wireframe data (`hide-non-selected-wireframes`) and write selected wireframe data to a file (`write-selected-wireframes`) using new commands.
- **OP-3893** Design Direction controls on the Preparation screen no longer appear if there are no FXS design data.

Utilities & Supporting Services

- **CORE-9967** The DM to DMX file converter is now supported by a desktop shortcut.
- **CORE-9760** "MineScape Block Model" no longer appears in the Data ribbon's "External" menu as it is now fully integrated with the Data Source Drivers collection.
- **CORE-8754** A new **RocScience Dips** export driver has been added to the Data Source Drivers set to allow you to export string data in the Dips format, describing dip, dip direction and midpoint coordinate.

Additional Core Improvements

- **CORE-9827** .dmx.tmp files are now ignored by the **Project Files** and **Project Data** control bars.
- **CORE-9775** As part of the project to standardize Studio ribbons, icon updates have been made.
- **CORE-9732** Read-only DM files are now converted to read-only DMX files during project or utility-initiated conversion.

- **CORE-9711** Documentation for `EXTRA`'s `RAND` and `RANDBETWEEN` numeric functions has been improved.
- **CORE-9649** Block model fields in the Text Importer are now ordered more sensibly.
- **CORE-9604** The default field of view angle for new projects is now 45 degrees (set-view-fov command).
- **CORE-9586** To increase system security, we have blocked the display of online content in the Customization window.
- **CORE-9583** In Files, Fields and Parameters screens running in Dark mode, text in dropdowns is now more readable.
- **CORE-9579** `COMPDH` now supports up to 5 `ZONE` fields to composite within, and five optional fields `DOM1` to `DOM5` can now be specified to record dominant categorical values (by length) within each composited sample.
- **CORE-9578** The Script Recorder now generates syntax that aligns with Datamine's safer scripting policy.
- **CORE-9574** The legacy script converter utility has been removed from product distributions.
- **CORE-9561** Rationalization of baggage files for help systems means Studio installation file sizes are now smaller.
- **CORE-9551** The **Datamine Studio Script Updater** has been provided to automatically convert your scripts to more protected versions.
- **CORE-9550** The Studio scripting environment now offers a safer scripting syntax, minimizing the potential impact of malicious thread actors.
- **CORE-9546** New calculated (virtual) fields are now available to calculate the dip angle (`_PDIP`) and direction (`_PDIPDIR`) of the best fit plane through a data object.
- **CORE-9542** A more secure mechanism for data object automation has been implemented. Consult your online help for more details.
- **CORE-9540** You can delete selected 3D overlays of the Project Data using the `<DELETE>` key.
- **CORE-9539** The **CalculateEdgeMetrics()** method now calculates values for the final edge of a closed perimeter.
- **CORE-9528** The Plots window **Section** and **View** ribbons now have new icons.
- **CORE-9526** It is now quicker to read and process DMX files containing alphanumeric columns.
- **CORE-9522** `WIREFILL` now supports retrieval criteria.

- **CORE-9521** COPYMOD now supports retrieval criteria.
- **CORE-9519** REBLOCK now supports retrieval criteria.
- **CORE-9490** The Text Importer can now be automated using any Studio product.
- **CORE-9482** The `switch-drillhole-points-traces` command is now available on the Format ribbon (Display Mode group).
- **CORE-9474** The **Text Importer** and INTEXT documentation has been extended and corrected.
- **CORE-9473** INTEXT can now process data using either a data definition (INDD) file or a SETTINGS file, or neither.
- **CORE-9449** The **CENTRE** file for the ELLIPSE process is no longer dependent on search, variogram or zone parameter file inputs.
- **CORE-9409** An issue causing an unsorted block model to become locked after a previous attempt to load it has been resolved.
- **CORE-9398** In COMPDH it has always been the case that if the **LENGTH** field in the input sample file is not equal to **FROM - TO** the **LENGTH** field is set to **TO - FROM**. This behaviour remains, but a maximum of 10 messages are issued in a process run.
- **CORE-9383** The **3D View** ribbon layout is now consistent between Studio products.
- **CORE-9382** The **Format** ribbon layout is now consistent between Studio products.
- **CORE-9378** The **Data** ribbon layout is now consistent between Studio products.
- **CORE-9359** Your product now includes a new control bar: **Project Data**. This combines the power of previous bars to categorize and display files, loaded objects and plot data.
- **CORE-9391** When using the Text Importer, you can now import alphanumeric trace and absent values into a destination field that is numeric.
- **CORE-9340** Unload all overlays of a specific data type using a new **Sheets** and **Project Data** control bar menu option.
- **CORE-9301** Legend controls within various screens have been reverted to more popular legacy behaviour (with improvements) and restyled.
- **CORE-9277** Quick Filter drop down lists now inherit the current look and feel theme.
- **CORE-9252** Project data bar icons for the Plots and 3D folders have been updated.

- **CORE-9233** By request, flat-rendered wireframes are now less shiny.
- **CORE-9229 Text Importer** scenario files (.dminsv) now appear in the Project Data control bar.
- **CORE-9228** If opening a Text Importer scenario, file detection has been improved and you can now browse for missing files.
- **CORE-9103** The **Project Data**, **Loaded Data** and **Holes** control bars now inherit visual themes.
- **CORE-9097** An issue that could make data picking difficult where data was precisely coincident with the section plane has been resolved.
- **CORE-9082 Drillhole Importer** now recognizes "Hole_ID" as a BHID mapping type.
- **CORE-9014** All commands relating to the obsoleted **Visualizer** window have been removed from the application.
- **CORE-8999** Tooltips have been added to the **Group Lithology** and **Assign Lithology** tasks.
- **CORE-8980** When adding a new unique value legend item in the New Legend Wizard, you can now add any other colour to the current palette.
- **CORE-8839** Documentation on snapping to a grid has been improved.
- **CORE-8805** File case names are now preserved in the default overlay when dragging and dropping files into the 3D window.
- **CORE-8763** 3D properties and similar screens now use a clearer and expanded toolset for legend management. See you help file for more details.
- **CORE-8699** An issue causing the `insert-by-segment-length` to fail when working with large data has been resolved.
- **CORE-8673** Issues causing unpredictable selection behaviour (or presentation of selected data) in the Plots window have been resolved.
- **CORE-8654** Selecting the outer boundary of a plot sheet now enables the **Manage** ribbon (not the **Home** ribbon as previously).
- **CORE-8625 Drillhole importer** now recognizes more field names when automatically mapping to system fields.
- **CORE-8519** Studio Data, Report and 3D View ribbons have been made standard in all Studio products other than Studio Mapper.
- **CORE-8510** The **Project Data** control bar now displays files external to the project folder with the same vertical line indicator as the Project Files control bar.
- **CORE-8196** `MODSPLIT` can now output either **MODELOUT**, **FULLMOD** or both. Previously, both outputs were always generated.

- **CORE-8143** It is now quicker to close a project without saving it.
- **CORE-7746** A new command `digitise-doughnut` lets you create complex string data in relation to an external perimeter and one or more closed internal strings.
- **CORE-7506** The **Drillhole Planner** now inherits the current visual theme.
- **CORE-7272** The **Edge Editor** is now available in this product. Use it to dynamically adjust string edges.
- **CORE-6637** This update features early access to a preview of our advanced string digitizing controls. Constrain the azimuth, length and gradient of new string segments as you draw. Enable this beta functionality using the **Project Settings** screen.
- **CORE-5878** The Project Data bar now permits multiple item selection.
- **CORE-5550** `smooth-gradient` can now be used to fully smooth (start to end) preselected strings.
- **CORE-1878** You can now import or load multiple files in one operation using new multi-file options.
- **GEO-718** The layout of the **Drillhole Importer** screens has been improved.

Utilities & Supporting Services

- **CORE-9629** This update includes an upgrade to the mesh wireframing engine (2.0.2.54).
- **CORE-9577** Your product installs a major update to License Services (7.0). This introduces encrypted traffic options for enhanced data traffic security.
- **CORE-9536** The Start Page environment has been made more secure.
- **CORE-9481** Data Source Drivers now export virtual data columns.
- **CORE-9362** If using the DmFile SDK, reading and writing records is now twice as fast as before.
- **CORE-8826** You can now import MineScape prism models where data overlaps in Z.
- **CORE-8524** An encrypted traffic option is now available to License Services server administrators. Requires a compatible client installation (7.0 or higher).
- **CORE-8524** We have added a new driver! Import UBC voxel model data using the new **Geosoft** driver option.
- **CORE-8160** The MineScape Block Model Importer has been added to the Data Import screen as a new driver: "MineScape strata model".

- **CORE-6521** You can now import and load Leapfrog mesh and project model file data using a new Data Source Driver.
- **MSO-1558** Documentation for MSO version 5.0 has been completed for this version.
- **MSO-1581** Evaluation method descriptions on the **Report** screen have been updated for consistency and clarity.

Defect Fixes

- **SNPVSPLUS-504** Studio NPVS documentation has been completely overhauled (both online and offline content).
- **SNPVSPLUS-491** An issue causing the Scheduler to fail when only one core was specified in Default Settings has been fixed.
- **CORE-9921** EXTRA's FLDFAIL parameter's default value of 1 has been reinstated (previously 0) to match earlier application versions.
- **CORE-9919** An issue causing system failure, if v1 or v2 commands were used in conjunction with plane alignment options, has been resolved.
- **CORE-9875** An issue preventing the initial display of colour chips on the Assign Lithology screen has been resolved.
- **CORE-9868** A data-specific issue causing Deswik import to fail has been resolved.
- **CORE-9855** An issue causing issues when snapping and zooming in conjunction with vertical 3D scene exaggeration has been resolved.
- **CORE-9826** An issue preventing the successful import of Deswik wireframe data has been resolved.
- **CORE-9761** Picking of data symbols rendered in 2D in screen space can now be selected as normal.
- **CORE-9745** An issue causing `REBLOCK` to delete the input block model, if additive fields are used, has been resolved.
- **CORE-9717** The Project Data Bar's "Create from Loaded Data" menu option now works as expected.
- **CORE-9716** Grids and Sections folders can no longer be removed from the Project Data bar.
- **CORE-9714** An issue causing the incorrect rendering of 3D drillhole cylinders has been resolved.
- **CORE-9710** Modeless dialogs are now reset as expected when a default profile is reinstated.
- **CORE-9700** When translating strings, points or wireframes, decimal values now persist correctly between dialog sessions.
- **CORE-9673** 3D overlay group projections in Plots now react immediately to Project Data or Sheets control bar changes.
- **CORE-9670** The `UNFOLD` wizard now has context-sensitive help.
- **CORE-9653** When importing DXF/DWG points data, the 'Include Hatches' option is no longer displayed.

- **CORE-9642** 3D window axis and scale indicators now hide and show immediately following window configuration changes.
- **CORE-9631** The `INTEXT` process no longer stalls indefinitely if settings are unexpected.
- **CORE-9622** An issue causing `SELWF` to run more slowly than expected has been resolved.
- **CORE-9618** An issue causing move-points to pick an incorrect target has been resolved.
- **CORE-9615** An issue preventing the import of a Vulcan block model has been resolved.
- **CORE-9613** An issue causing incorrect display of Information Mode output, if the 3D view was orthogonal to the active section, has been resolved.
- **CORE-9595** The Command Toolbar contents are now more easily visible in Dark mode.
- **CORE-9582** The Move String command is now available again on the ribbon.
- **CORE-9562** Crash reports are now registering successfully in Freshdesk.
- **CORE-9537** DMX files input to transform-coordinates now generates output files usable by Datamine Supervisor.
- **CORE-9518** You no longer see an empty message box when trying to save an object to an open DMX file.
- **CORE-9517** The Text Importer is now storing the Delimiter correctly if not a comma.
- **CORE-9509** The Text Importer now reads fixed width values correctly.
- **CORE-9503** "Ignore Clipping" instructions at the overlay level are now applied immediately.
- **CORE-9499** An issue preventing string editing in plan view with >1 exaggeration in Z has been resolved.
- **CORE-9419** The Point Cloud Reconstruction wizard now automatically generates a scenario on entering a new scenario name.
- **CORE-9403** An issue causing the incomplete display of model cells in intersection at some section orientations has been resolved.
- **CORE-9370** An issue causing unexpected data rounding in `TRIFIL` has been resolved.
- **CORE-9357** `WIREFILL` now correctly interprets default plane information, and a `@PLANE` parameter is added to allow behaviour override.

- **CORE-9353** An issue causing `SELWF` to fail when processing retrieval criteria has been resolved.
- **CORE-9348** The select-perimeter command no longer behaves inconsistently when called from a script.
- **CORE-9264** An issue causing incorrect IJK values to be generated via the Text Importer has been resolved.
- **CORE-9236** An issue causing the incorrect alignment of a georeferenced image has been resolved.
- **CORE-9231** An issue preventing the successful reinstatement of a UI profile has been resolved.
- **CORE-9100** When transforming coordinates, and converting EPSG 5533 to WGS 84 and exporting to Earth, Lat/Long columns are no longer inverted.
- **CORE-9012** When transforming geographic coordinates, you can now generate output files on a non-primary drive.
- **CORE-8952** The zoom command now accurately centers the screen if the scene is exaggerated.
- **CORE-8794** An issue causing clipped block model data to be rendered invisible, when the clipping section deviates from the major axes, has been resolved.
- **CORE-8696** An issue causing smooth-gradient (smg) to fail with a large string data file has been resolved.
- **CORE-8632** Importing Deswik wireframe data now imports all available attributes. Previously some were not imported.
- **CORE-8582** An issue causing unexpected view navigation in scenes with vertical (Z) exaggeration has been resolved.
- **CORE-8259** 3D window section clipping is now reapplied correctly when the section corridor width is changed.
- **CORE-8052** An issue causing **SAMPOUT** to be created incorrectly when writing alphanumeric fields has been resolved.
- **CORE-7929** 3D plot overlay labels now react to clipping settings as expected.
- **CORE-6800** Studio now supports the concept of a temporary session-only data attribute.
- **CORE-5413** **REBLOCK** no longer fails if there is a space in the file in the project folder.
- **CORE-5270** Unable to cancel (ESC Key) Set Section about a single point
- **CORE-5137** Adding a trailing space to a new project name no longer causes Studio to create 2 project folders.

Additional Defect Fixes

- **CORE-10239** We have corrected several typos in the TRIVAL parameter descriptions to improve clarity.
- **CORE-10235** The INTEXT process help page now has the correct browser tab and search results text.
- **CORE-10215** You now see more consistent block model slices when viewing oblique sections, with missing stripes in intersection mode fixed.
- **CORE-10198** We have fixed an issue where saved DTM wireframes could display as strings with unexpected XP/YP/ZP attribute columns.
- **CORE-10183** An issue that could causing instability when loading certain points and points-like data files has been resolved.
- **CORE-10180** A rare issue that could result in field names becoming truncated has been resolved.
- **CORE-10172** In the TRIVAL process the message reporting the number of output records is no longer repeated multiple times.
- **CORE-10164** When STATS is run with @PRINT=0 the message: "WEIGHTING FIELD:" is no longer output multiple times
- **CORE-10151** SWATHPLT no longer uses substitution variable names as file names if output files SWATH1 and/or SWATH2 are not defined.
- **CORE-10126** TONGRAD now warns if you use the same field for multiple outputs in dmx and continues using only the first occurrence.
- **CORE-10076** Create Model Prototype now previews rotated block models in the correct location.
- **CORE-10057** An issue causing a driver load error message, when converting Leapfrog data via the Data Converter, has been resolved.
- **CORE-10053** An issue preventing the display of context-sensitive help of some Data Source Driver screens has been resolved.
- **CORE-10038** Loaded block model prototypes are now listed as expected in the Project Data bar's 3D folder.
- **CORE-10020** The Project Wizard's help button now displays the expected help content.
- **CORE-10019** An issue causing HOLES3D to fail where a field name also matched an EXTRA function name, has been resolved.

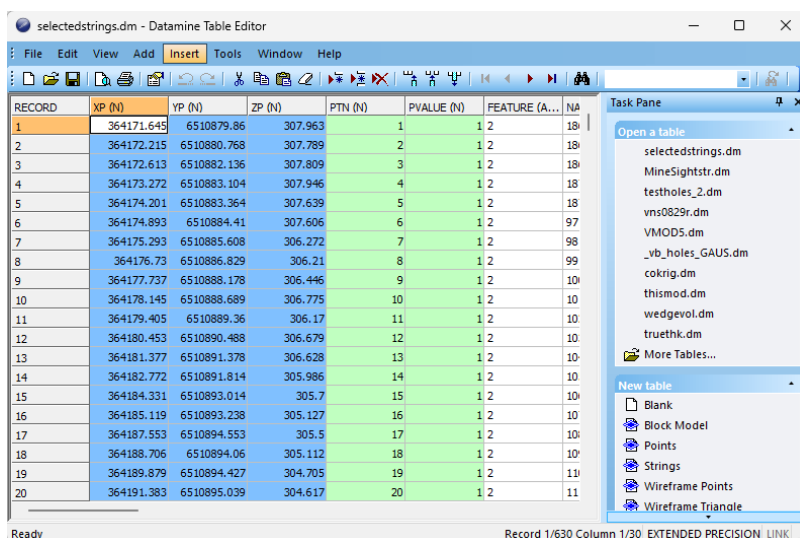
- **CORE-10011** The quick key for `doughnut-storage-switch` has been changed to "ddss" to avoid ambiguity with the `delete-string-segment` command.
- **CORE-9985** The GetTag method on the DmFile table object now returns the expected tag value using Javascript.
- **CORE-9984** We have fixed an issue in the Project Data bar where the first item in a top-to-bottom Shift-select could become unselected if it was scrolled out of view while selecting multiple items.
- **CORE-9873** Swipe selection can now be used when selecting samples using the Assign Lithology tool's Paint mode.
- **CORE-9863** An issue causing unexpected rendering of block model cuboid edges with clipping applied.
- **CORE-9825** SWATHPLT is now faster when @ANGLE1,2 and 3 = 0 (unrotated swaths).
- **CORE-9799** We have updated DMX model loading so that dragging and dropping a DMX file that is already loaded now creates a new overlay instead of showing an error, while other load methods keep the existing warning.
- **CORE-9697** An issue causing WIREPE to create strings at incorrect intervals has been resolved.
- **CORE-9680** The @CHECKROT parameter is now working as expected in SELPER.
- **CORE-9657** We have updated the MineScape Model Importer so it can no longer be opened multiple times at once, preventing the system instability caused by closing one of the duplicate dialogs.
- **CORE-9634** An issue causing SELPER to print unexpected output file alphanumeric values has been resolved.
- **CORE-9576** If section auto-alignment is enabled, this is now applied as expected when swapping sections via the Sheets control bar.
- **CORE-9557** We have updated the Project Data bar so grids and sections are no longer underlined.
- **CORE-9535** Ellipsoid selection buttons (Home ribbon) are now only enabled if ellipsoid data is loaded.
- **CORE-9271** You can now successfully use the Studio RM Fusion Driver to import and reload FusionXI database tables.
- **CORE-9183** SWATHROT now runs as expected in Studio RM.
- **CORE-9064** An issue causing some parts of a rotated model to be ignored when using SWATHPLT has been resolved.

- **CORE-8492** The Find Command screen now lists 'tra' as the quick key for string and point translation commands.
- **CORE-8819** You can now redo `extend-segment-virtual-intersect` operations as expected.
- **CORE-8494** An intermittent issue that could cause your application to stop processing commands such as `unload-all`, has been resolved.
- **CORE-7057** Fixed an issue where Calculate Wireframe Volume did not report separate volumes and spatial statistics for each key field value, ensuring results are now correctly split by the selected key field.
- **CORE-3559** We have fixed the Table Editor's Variogram-Model definition so the data definition for GRADE and GRADE2 fields are now alpha (A24), not numeric.

Studio NPVS 3.0 Release Notes

Key Improvements

New Datamine File Format



RECORD	XP (N)	YP (N)	ZP (N)	PTN (N)	PVALUE (N)	FEATURE (A...	NA
1	364171.645	6510879.86	307.963	1	1.2		18
2	364172.215	6510880.768	307.789	2	1.2		18
3	364172.613	6510882.136	307.809	3	1.2		18
4	364173.272	6510883.104	307.946	4	1.2		18
5	364174.201	6510883.364	307.639	5	1.2		18
6	364174.893	6510884.41	307.606	6	1.2		97
7	364175.293	6510885.608	306.272	7	1.2		98
8	364176.73	6510886.829	306.21	8	1.2		99
9	364177.737	6510888.178	306.446	9	1.2		10
10	364178.145	6510888.689	306.775	10	1.2		10
11	364179.405	6510889.36	306.17	11	1.2		10
12	364180.453	6510890.488	306.679	12	1.2		10
13	364181.377	6510891.378	306.628	13	1.2		10
14	364182.772	6510891.814	305.986	14	1.2		10
15	364184.331	6510893.014	305.7	15	1.2		10
16	364185.119	6510893.238	305.127	16	1.2		10
17	364187.553	6510894.553	305.5	17	1.2		10
18	364188.706	6510894.06	305.112	18	1.2		10
19	364189.879	6510894.427	304.705	19	1.2		11
20	364191.383	6510895.039	304.617	20	1.2		11



The Datamine file format used natively by Studio products originated from Datamine's "Native File System" over thirty years ago. It has been maintained and supported by Datamine products since then. The mining industry has seen a significant increase in data volume and complexity during this time, which has started to strain the capabilities of the Datamine format.

Our response to this challenge is a new file format that is more suitable for the current and future data requirements of the mining industry. This format has a new file extension; .dmx.

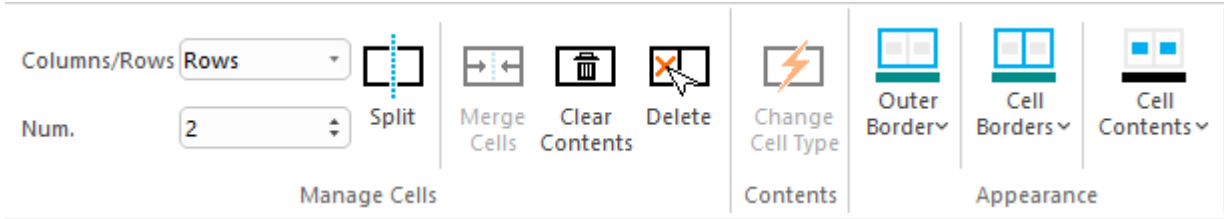
Files are smaller and now supports up to 2048 columns. Your application generates .dmx files by default (this can be changed on the **System Options** screen. Both legacy (.dm) and new .dmx format files can be read. Other improvements will follow, as our new format is highly extensible and provides many opportunities to make data handling easier and smarter in the future.

The new format integrates smoothly with modern Studio products and your existing workflows and customization scripts, and the Table Editor can be used to view both legacy and new formats. For bulk file conversion, there's even a useful DM to DMX file conversion utility in the **Data Converter** installation folder should you wish to batch convert input files.

You can recognize .dm and .dmx files in the **Project Files** control bar:

	.dmx file	A file in the proprietary .dmx Datamine binary file format.
	.dm file	A file in the legacy .dm Datamine binary file format.

Plots Overhaul



We've made major changes to the way plots are constructed with this update.

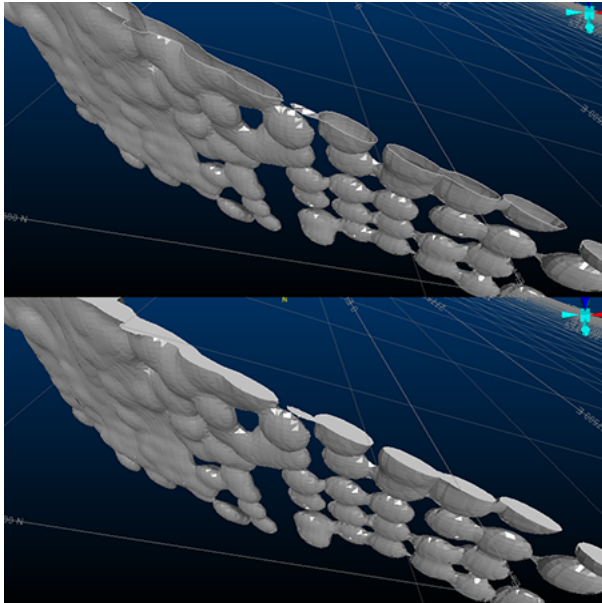
Plots are formed from a collection of plot items, ranging from 3D projections and associated sections, to clip art, text boxes and so on. You asked us to improve the usability of these tools so we've taken a step back and changed our approach to reporting. In a good way.

Plot items are now supported by their own ribbons, displayed whenever a particular plot item is selected, be that a projection, a north arrow, title box or whatever. With your help, we analysed the most commonly-used features and settings and have created a dedicated ribbon of tools for each plot item type. For example, managing the tabular contents of title box cells is now much easier thanks to handy cell managers.

The **Plots (Manage)** and **Plots (View)** ribbons have also been combined.

Filled Wireframe Intersections (Preview)

We've added a new wireframe formatting option to the Wireframe 3D Properties screen: **Fill intersection**.

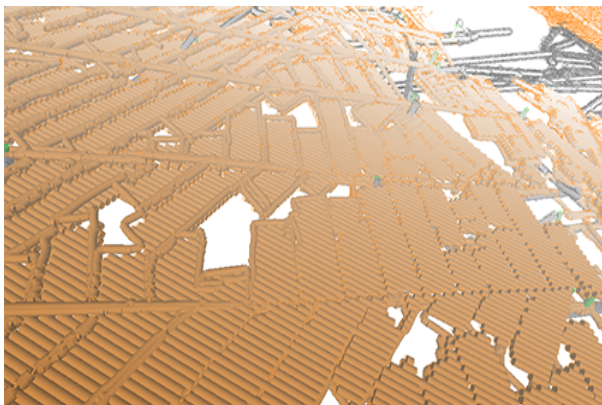


Wireframe data shown with standard clipping and filled intersection mode

Now, you can display clipped wireframes with solid intersections, emulating a 'filled' volume. This can be really useful when visualizing volumes in cross section.

Note: This feature is still in development, but we thought we'd let you have a look at progress so far. There are some limitations, such as viewing intersections of multiple coincident intersection planes of different colours, but it should give you an idea of what we're aiming for.

3D Window Improvements



The display of large data so that it has a lower impact on system and application performance. This includes new, smart settings to control how and when 3D scene data is rendered, making sure the system only has to draw what it needs to. To

support these changes, new 3D options have been introduced to control **Environment Settings** (automated scene clipping) and a **Render on Demand** setting (on by default), added to the 3D system settings screen.

Text Importer

Data Definition Mapping: `_vb_collars.txt`

Data definition: Collars

Include	Column Name	Mapped Type	Output Name	Type	Length	Default	Implicit
<input checked="" type="checkbox"/>	BHID	✓ BHID	BHID	Alpha	8	0	N
<input checked="" type="checkbox"/>	XCOLLAR	✓ XCOLLAR	XCOLLAR	Numeric	0	0	N
<input checked="" type="checkbox"/>	YCOLLAR	✓ YCOLLAR	YCOLLAR	Numeric	0	0	N
<input checked="" type="checkbox"/>	ZCOLLAR	✓ ZCOLLAR	ZCOLLAR	Numeric	0	0	N
<input checked="" type="checkbox"/>	ENDDEPTH	None	ENDDEPTH	Numeric	4	-	N
<input checked="" type="checkbox"/>	REFSYS	None	REFSYS	Alpha	8	-	N
<input checked="" type="checkbox"/>	REFMETH	None	REFMETH	Alpha	4	-	N
<input checked="" type="checkbox"/>	ENDDATE	None	ENDDATE	Alpha	12	-	N

Import one or multiple text files using a new **Text Importer** screen.

Select as many files as you need to import and configure all importation options on a single screen, including automated and interactive field mapping for your selected data type and preview your file before you import.

Once you're happy with your settings (which can be set for each individual file if required), store your configuration information in a handy scenario file which can be used to consistently import data in the future and to share with others in your organization.

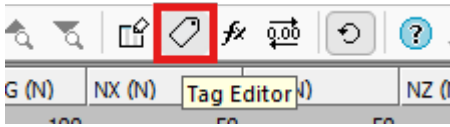
New Processes

- **INTEXT** – You asked for a file-based process to convert text files to Datamine files, so we created **INTEXT**. Either using the data definition specified in the incoming file, or by choosing the definition of another file, import text data using a range of options.
- **COMBTRI** – Append several wireframes to a single file.

Datamine File Tags

With the introduction of the new DMX file format in this version (see above), a new facility arrives for all users; table tagging.

We intend to make use of this new feature in the future, but you can also add your own data tags and values to any .dmx file using the Table Editor, which includes a new **Tag Editor** function on its toolbar:



Add as many tags and associated values as you like. This could be useful, say, to embed the status of a model or other design files, or to provide some implicit spatial context to data (mine, area, level, for example) without requiring additional data attributes.

Command & Process Improvements

- **COMBTRI** allows up to 20 wireframe files to be combined in a single operation.
- You can now right-click a visible 3D object to set it as the **current object**.
- **extend-segment-virtual-intersect** can now be used on closed strings.

All Improvements

Commands & Processes

- **Case: Multiple Cases** Your product can now read and write the new Datamine binary format (.dmx) and will automatically convert non-default files in the project folder when a project is opened.
- **Case: Multiple Cases** A new scenario-based **Text Importer** lets you import (single or batch) text files as a specified data type.
- **Case: Multiple Cases** Several improvements and fixes have been made to improve 3D window visualization.
- **Case: SNPVS-1104** Block model size limits have been increased to import block models that are larger than previous limits in a single dimension.
- **Case: SNPVS-1103** FMS functionality has been removed from Studio NPVS. This functionality has been superseded by Studio NPVS+.
- **Case: SNPVS-880** User defined pits are now included in Pit and Phases charts.
- **Case: CORE-9284** If you create a project using a folder that contains files in a non-native format, they are automatically converted.
- **Case: CORE-9265** By popular request, the "red" quick key combination now launches reduce-points (not simplify-string) as in previous versions. Menu options have also been reinstated.
- **Case: CORE-9240** Plot item locations now remain static when adjust the Relative positioning option for locatable plot items.
- **Case: CORE-9239** You can now interactively pick the target position of a locatable plot item using a new Anchor ribbon button.
- **Case: CORE-9234** DMX data saved from a Studio application now embeds the creating product and version as metadata (tags).
- **Case: CORE-9112** Studio project startups now include a check for local project files in a non-default format, and converting them to the default format.
- **Case: CORE-9021** Your product's Mesh wireframing library has been updated to version 2.0.1.53.
- **Case: CORE-9006** You can now use the "uc" quick key combination to apply clipping in Plots sheets.
- **Case: CORE-8938** A warning is now displayed when running HOLES3D when the BHID value in the Collar and Survey files doesn't match.

- **Case: CORE-8929** Loaded data objects that have metadata tags display those tags in the Properties control bar.
- **Case: CORE-8918** Supporting plugins for PTCLD2WF and the Point Reconstruction Wizard have been updated.
- **Case: CORE-8895** In the Project files control bar, when using the context menu on a macro file that contains more than 9 macros, Studio doesn't crash and works as expected.
- **Case: CORE-8876** You can now choose to manually or automatically adjust 3D window clipping planes using the Environment Settings screen.
- **Case: CORE-8860** The "red" quick key combination now runs the **simplify-string** command, not the legacy reduce-points command. Ribbon access has also been updated.
- **Case: CORE-8702 query-angle** now outputs angle information in degrees, minutes and seconds.
- **Case: CORE-8697 intersect-drillholes-wireframes** now outputs the intersection angle between drillhole and wireframe.
- **Cases: CORE-8490, CORE-8452, CORE-8357** Front & back 3D window clipping distances now computed automatically based on object's bounding box.
- **Case: CORE-8465** Context-sensitive Section and View ribbons now support projection editing and creation in the Plots window.
- **Case: CORE-8460** The **Plots (Manage)** and **Plots (View)** ribbons have been combined.
- **Case: CORE-8424** Quick filtering wireframes and block models is now much quicker.
- **Case: CORE-8310** By default, data is now rendered in the 3D view only when required. This makes application usage with large data much quicker with more responsive controls.
- **Case: CORE-8216** An Anchor ribbon has been introduced to support locatable plot items.
- **Case: CORE-8206** Reloading and refreshing large data objects is now quicker.
- **Case: CORE-8093** Improvements have been made to the way strings and points are rendered in the 3D window, to improve performance.
- **Case: CORE-8047** Changes to the Plots ribbons will now be automatically shared with all Studio products, making forward development quicker and easier.

- **Case: CORE-8012** A new context-sensitive Text Cell ribbon has been created to modify the contents of text cells in title boxes.
- **Case: CORE-7966** You can now overwrite an existing legend instead of having to specify an unused/unique legend name.
- **Case: CORE-7946** Legend box plot item formatting can now be performed using a new Legend Box context-sensitive ribbon.
- **Case: CORE-7732** A new **Text Importer** screen lets you import multiple ASCII text files with per-file configurations and share your importation settings as a scenario.
- **Case: CORE-7713** An issue preventing the automatic generation of legends by data type has been resolved.
- **Case: CORE-7694** Symbol plot item formatting can now be performed using a new Symbol context-sensitive ribbon.
- **Case: CORE-7693** Text Box formatting can now be performed using a new Text Box context-sensitive ribbon.
- **Case: CORE-7692** Title box formatting can now be performed using a new Title Box context-sensitive ribbon.
- **Case: CORE-7691** Scale bar formatting can now be performed using a new Scale Bar context-sensitive ribbon.
- **Case: CORE-7690** North arrow formatting can now be performed using a new North Arrow context-sensitive ribbon.
- **Case: CORE-7342** You can now right-click a visible 3D object to set it as the current object.
- **Case: CORE-7279** **extend-segment-virtual-intersect** can now be used on closed strings.
- **Case: CORE-7161** The Create Model Prototype screen now has additional support for both new and copied rotated model prototypes.
- **Case: CORE-7051** **COMPDH** now lets you save residual composites to a new &RESIDUAL output file option.
- **Case: CORE-2410** A new process - **INTEXT** - converts text files to Datamine files using an existing data definition and other parameters.
- **Case: CORE-231** We've added a new wireframe visualization option; **Fill intersection**.
- **Case: CORE-68** A new command - **clip-strings-to-wireframe** - lets you trim string data in relation to a wireframe surface or volume.

User Experience

- **Case: CORE-9108** The Quick Filters screen now inherits the selected look and feel option.
- **Case: CORE-9086** The INTEXT text import process has been added to the Data ribbon
- **Case: CORE-8973** The Project Files control bar now differentiates .dm and .dmx formats by distinct icons.
- **Case: CORE-8937** The Project Files and Project Data control bars now display up to 30 macros in a .mac file.
- **Case: CORE-8935** A new splash screen has been implemented.
- **Case: CORE-8906** Large Data Mode has been relabeled "Keep data in front of the camera" to make it clearer what it does.
- **Case: CORE-8851** The Table Editor now supports visual themes.
- **Case: CORE-8765** The **Georeference Objects** screen now inherits current look and feel settings.
- **Case: CORE-8742** Images and colour scheme have been updated for the New Project Wizard.
- **Case: CORE-8601** The Project Data bar now displays the first level of available folders by default.
- **Case: CORE-8564** The obsolete command erase-wireframe-surface has been removed from the ribbon system.
- **Case: CORE-8488** Icons for the visualization window tabs and control bars have been updated.
- **Case: CORE-5599** Managed task windows, such as implicit modelling and lithology assignment tasks, now persist their docked UI status between project sessions.

Utilities & Supporting Services

- **Case: CORE-8915** ALS Coreviewer options have been removed from this product. Datamine no longer resells ALS Coreviewer.
- **Case: CORE-8759** End User License Agreement references have been replaced with Terms and Conditions.
- **Case: CORE-8747** You can now associate meta data with .dmx files using the Table Editor. This facility is not available for legacy .dm files.
- **Case: CORE-8585** You can now import up to 256 fields via the Surpac driver, and you are alerted if this limit is exceeded
- **Case: CORE-8439** A standalone utility has been created to convert .dm to .dmx files.
- **Case: CORE-8329** A new method more accurately calculates the volume of Prismatic models, as imported by the MineScape Importer utility (minescape-to-blockmodel command).
- **Case: CORE-6986** .xyz files can now be imported when importing Text files to the project.

Documentation & eLearning

- **Case: CORE-9348** EXTRA help files, including the examples topic, have been updated for clarity and consistent terminology.

Scripting & Automation

- **Case: Multiple** Scripted access to Datamine files has been extended to manage both legacy and new DMX file processes.

Additional Defect Fixes

- **Case: SNPVS-1122** The Check Value tool no longer shows incorrect results when using custom variables and multiple scenarios.
- **Case: SNPVS-1119** An error when creating scheduling period pits is now resolved.
- **Case: SNPVS-1113** Custom variables in Economic Settings now persist between dialog sessions as expected, when the locale is not set to English.
- **Case: SNPVS-1112** An issue preventing the creation of a pit partition boundary has been resolved.
- **Case: SNPVS-1109** A data-specific issue that could result in incorrect truck hours warnings followed by an incomplete report has been resolved.
- **Case: SNPVS-1074** An issue with initializing pushback settings has been resolved.
- **Case: SNPVS-1056** An issue causing system instability after copying and pasting MAO settings has been resolved.
- **Case: SNPVS-995** An issue that could cause system instability when optimization settings are set to use multiple cores, has been resolved.
- **Case: SNPVS-693** An error when recalculating pushbacks is now resolved.
- **Case: CORE-9000** Enabling and disabling values in Assign and Group Lithology tasks now shows and hides drillhole intervals as expected.
- **Case: CORE-8947** 1-letter macro file names now appear in the Project Files control bar as expected.
- **Case: CORE-8947** SELWF now produces expected results when there are spaces in the field name values of ZONE.
- **Case: CORE-8867** An issue preventing the successful installation of License Services on some Windows Server platforms has been resolved.
- **Case: CORE-8848** The double-sided 3D wireframe rendering setting is now correctly saved to the project.
- **Case: CORE-8823** .var files now reference the correct stack version.
- **Case: CORE-8820** A regression of field addition in EXTRA when parsing numbers with scientific notation has been resolved.
- **Case: CORE-8811** An issue caused by swapping Snap Mode settings has been resolved.
- **Case: CORE-8801** An intermittent issue affecting file lookups when running macros has been resolved.

- **Case: CORE-8784** Wireframes generated by SWATHPLT now include consistently oriented triangles.
- **Case: CORE-8783** Making a plot item locatable no longer unexpectedly changes that plot item's position.
- **Case: CORE-8757** An issue causing PPQQPLOT to fail with a large input file has been resolved.
- **Case: CORE-8754** An issue causing system shutdown after reordering georeferencing table values (**georeference-objects**), has been resolved.
- **Case: CORE-8675** An issue causing **converge-segments** to display unexpected results after undoing the operation has been resolved.
- **Case: CORE-8670** The BOOLEAN process no longer fails when the two inputs (in the same run) have a column with the same name but a different data type.
- **Case: CORE-8610** 3D object bounding boxes, used for 3D view configuration are now set correctly for all string object entities.
- **Case: CORE-8583** An issue causing an orthographic 3D view corruption where the front clipping plane distance is very large, has been resolved.
- **Case: CORE-8530** An issue causing system instability, when clipping in the Plots window using a quick key, has been resolved.
- **Case: CORE-8523** An issue attempting to print screen contents when Info Mode is active has been resolved.
- **Case: CORE-8479** In Plots, setting a primary clipping width to a value larger than the extent of the section no longer causes the midpoint to be moved outside of the section extents.
- **Case: CORE-8475** An issue causing unexpected behaviour when snapping at high zoom levels has been resolved.
- **Case: CORE-8126** When assigning attributes via perimeters, you can now group attributes using the system SURFACE attribute.
- **Case: CORE-8087** An issue that could cause a progressive memory leak when reloading a data object has been resolved.
- **Case: CORE-7645 HOLES3D** now considers dip and bearing information from both a survey and collars file, prioritizing the survey file information. DIPMETH is applied to all data, regardless of source.
- **Case: CORE-6591** A repetitive warning message in Table Editor relating to undo operation performance can now be disabled as expected.
- **Case: CORE-6002** An issue preventing the update of associated screens after renaming 3D overlays has been resolved.

- **Case: CORE-3477** You can now generate a 2 point vertical plane by selecting 2 vertically-aligned points.
- **Case: CORE-2248** Macro names in a .mac file now appear correctly via the Project Files control bar.

Datamine enables efficient and sustainable mining through the application of world-leading technology and services.

Read the Docs

docs.dataminesoftware.com

Get in Touch

www.dataminesoftware.com/contact

www.dataminesoftware.com/support

